

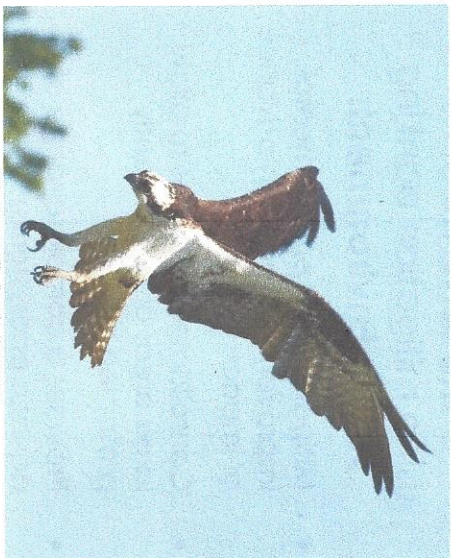


The Wilbur Island Mitigation Bank is a 140-acre wetland which had been tidally flooded prior to being diked in the 1950's to create pastureland, and over the last several years has been restored to its natural state by protecting the neighboring properties, removing the dikes and restoring native vegetation. It provides a wide array of habitat conditions that are crucial to many species indigenous to the area, with several protected species including Coho Salmon. Restoring & protecting the habitat on this 300-acre island is crucial for fish such as salmon and steelhead for acclimating between freshwater & the ocean.



*Photo credit: NOAA Fisheries Service, Southwest Fisheries Science Center

Several studies have identified the area as having a very high preservation value, with the western portion being identified as the 'second largest relatively undisturbed tidal marsh in the Siuslaw estuary,' receiving the highest possible score for Salmonid Diversity. (Brophy 2005)



*Photo credit: Tracie Koverner

CONTACT US
for further information:

Wilbur Island Mitigation Bank
Megan Gerber, Office Manager
Don Wilbur Ltd. Partnership
PO Box 40 / 15120 Hwy 36
Deadwood, OR 97430

www.donwilbur.com

Office: 541-964-3345

Toll-Free: 877-964-3345

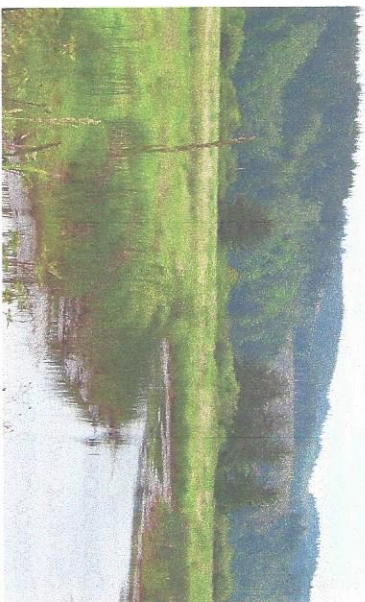
Email: dwilbur@casco.net



*Photo credit: Dick Brainerd

Wilbur Island Wetland Mitigation Bank

Siuslaw River estuary
Cushman, Oregon



Wilbur Island Mitigation Bank is...

- Providing critical habitat and perpetual protection for migrating and indigenous species such as Oregon Coast Coho Salmon, Chinook Salmon, Steelhead (anadromous Rainbow Trout), Eulachon, Pacific Lamprey, native Eelgrass, amphibians, and many shore birds, game birds and birds of prey...
- Balancing conservation, property rights and development concerns in a responsible and sustainable way...
- Part of a sensible environmental solution for Oregon's Central Coast!

What is Mitigation Banking?

Mitigation banking is used by contractors, developers & agencies to allow development in areas with wetlands by providing "no net loss" compensation for wetlands impacted at another comparable location.



*Photo credit: Allen Martin

What is the Process?

Developers and landowners who wish to develop wetland areas must apply for a Removal-Fill Permit with the Oregon Department of State Lands (DSL) and the US Army Corps of Engineers (USACE).

Anyone wishing to implement a project that will impact a wetland must first show how they have attempted to avoid and minimize any wetland impacts, and then compensate for unavoidable impacts with their permit application.

The Oregon DSL provides a Removal-Fill Guide with laws, rules and tips for working with the agencies, available on their website,

<https://www.oregon.gov/dsl/WW/Pages/Mitigation.aspx>.

Contact Don Wilbur Ltd. for current pricing.

THE BENEFITS of using mitigation banking To the Environment:

- Mitigation and environmental improvements occur in advance of impacts;
- Consolidates resources to allow large areas of permanently protected habitat;
- Provides a complete range of aquatic ecosystems;
- Helps approach the national goal of no-net loss of protected species and their habitats;
- Emphasizes best available science, focusing on results.

THE BENEFITS of using mitigation banking To the Project Owner and Developer:

- Reduces regulatory review and permit processing time;
- Reduces uncertainty: available immediately upon permit approval;
- Eliminates need to dedicate or acquire land for mitigation, maximizing use of your property;
- Eliminates subcontracted design and construction costs;
- Transfers all future maintenance, monitoring responsibilities and risks from the developer to the bank.

BENEFITS of wetlands include *

- **Flood Control.** Wetlands function like a sponge, soaking up water that comes in with the tides, or from periodically flooding rivers.
- **Pollution Filter.** If trees are the lungs of the planet, then wetlands are its kidneys. Wetland demonstration projects show significant reductions in nitrates, phosphorus, and heavy metals.
- **Storm Buffer.** Healthy wetlands help absorb energy and reduce damage from storm surges.
- **Recreation and Tourism.** Between bird watching, biking, hiking, and kayaking, wetlands provide people with many ways to enjoy nature.
- **Carbon Sink.** Because the soils found in wetlands can store carbon for hundreds of years, they play an important role in fighting climate change.

*Earthshare.org, 2015

Wilbur Island Mitigation Bank is...

located on the Siuslaw River near Florence, Oregon, and may provide estuarine or freshwater mitigation credits within the Siuslaw River and Coastal Lakes watersheds. Uses outside of these areas must be evaluated on a case-by-case basis.

Service Area - Wilbur Island Mitigation Bank

